



User Manual

SCD Software



Important User Information

Because of the variety of uses for the products described in this publication, those responsible for the application and use of this control equipment must satisfy themselves that all necessary steps have been taken to assure that each application and use meets all performance and safety requirements, including any applicable laws, regulations, codes and standards.

The illustrations, charts, sample programs and layout examples shown in this guide are intended solely for purposes of example. Since there are many variables and requirements associated with any particular installation, Rockwell Automation Allen-Bradley does not assume responsibility or liability, including intellectual property liability for actual use based upon the examples shown in this publication.

Related Safety Information

You are responsible for the safety of the entire installed control system and for meeting all applicable laws, codes, and safety requirements.



ATTENTION: As the installer of this control system, you must be knowledgeable of other applicable standards pertaining to safety recommendations related to:

- Machine Construction
- General Electrical
- Machine Guarding
- Point of Operation guards, safety light curtains, mechanical guards, and Two hand controls

In addition to local laws and codes, you are responsible for the safety recommendations detailed in all applicable codes and standards including:

- OSHA Regulations
- ANSI Standards
- NFPA
- CSA

IMPORTANT Rockwell Automation reserves the right to make revisions to these installation instructions and disclaims liability for all incidental and consequential damages related to the furnishing, performance and use of this material.

Table of Contents

About this Documentation 2

Installation of the Software 4

Product Description..... 5

User Interface..... 6

Working with Projects 8

Communication 9

Configuration 9

Diagnosis Data..... 11

All specifications subject to change.

IMPORTANT: Save these instructions for use at a future time.

<p>Generally recognized technical regulations and quality assurance system ISO 9000 are carefully applied during the development and production of Rockwell Automation products.</p>
--

Rockwell Automation reserves the right to make changes or revisions to the material contained in this publication and cannot be held liable for incidental or consequential damages resulting from the furnishing, performance or use of this material.

About This Documentation

Please read this chapter carefully before working with this documentation and the Safety Configuration & Diagnostic (SCD) software.

Function of This Document

This manual instructs the machine operator's technical personnel in the operation of the SCD software for safety devices supplied by Allen-Bradley Guardmaster.

It does not provide instructions on the operation, commissioning and maintenance of the safety devices themselves. Please refer to the documentation enclosed with the safety devices for information on operation, commissioning and maintenance.

Target Group

This software documentation addresses planners, developers and operators of systems which are to be protected by one or more safety devices supplied by Allen-Bradley Guardmaster.

It also addresses persons who integrate these safety devices into a machine, start it up for the first time, or who are in charge of servicing and maintaining the unit.

Information Depth

This software documentation contains information on the SCD software for safety devices supplied by Allen-Bradley Guardmaster. The manual provides an overview of the basic software functions. Please refer to the online help function for more detailed instructions on the configuration and diagnosis of devices.

Planning and using safety devices also require specialized technical skills which are not conveyed in this documentation.

Abbreviations

SCD Safety Configuration & Diagnostic software

Symbols and Formats Used

Throughout this manual we use the labels **ATTENTION** and **IMPORTANT** to alert you to the following:



ATTENTION!


Failure to observe may result in dangerous operation


ATTENTION: Identifies information about practices of circumstances that can lead to personal injury or death, property damage, or economic loss


ATTENTION helps you


- Identify a hazard
- Avoid a hazard
- Recognize the consequences


IMPORTANT: Identifies information that is especially important for successful application and understanding of the product.

 Display indicators show the status of the 7-segment display of sender or receiver:

 Constant display of the letter F

 Flashing display of the letter F

 Alternating display of F and 2

 LED symbols denote a flashing LED (upright orientation, 7-segment display, bottom)

➤ Take action...

Instructions for taking action are shown by an arrow. Carefully read and follow the instructions for action.

Note Refer to Notes for special features of the software or of the device.

Handling the Online Help Function

The SCD software is available with an online help function which provides information on the software functions and which provides a step-by-step description of the individual actions.

The following sections of the documentation can be opened in the list of contents:

- Manual on the SCD software in Portable Document Format (PDF)
- Operating instructions for the devices supplied by Allen-Bradley Guardmaster Safety Systems in Portable Document Format (PDF)
- Online help on the SCD
- Online help on device-specific subjects (configuration procedures)

The online help function can be opened separately using the command **Programs, Allen-Bradley Guardmaster Applications, Help on Allen-Bradley Guardmaster SCD.**

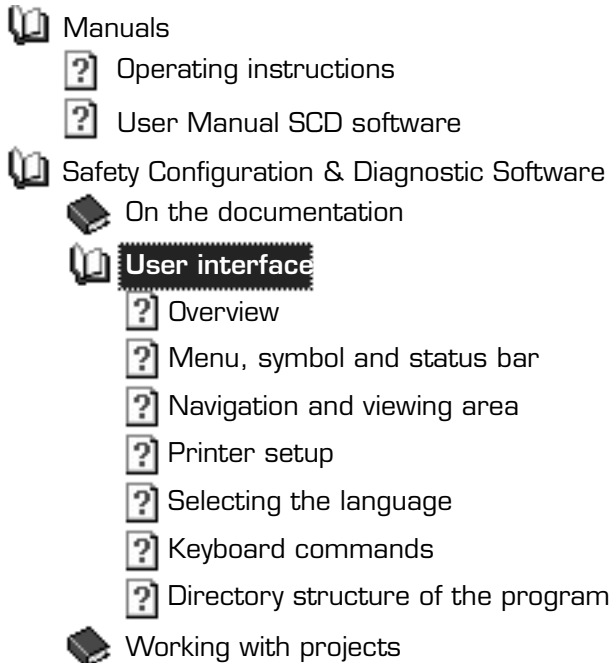


Figure 1: List of contents of the online help

- Go to menu ? in the software and select the command **Content** or click the help buttons in the dialogs. The command **Content** will open the list of contents of the help function; the help buttons will take you directly to the description in the appropriate dialog box.

User groups

Three user groups have been defined in the devices supplied by Allen-Bradley Guardmaster Safety Systems. These user groups have different authorizations for transferring configurations to the devices.

User group	Function	Diagnostic	Configuration
Machine operator	check devices	permitted	authorized to edit not authorized to send
Machine maintenance personnel	check devices	permitted	authorized to edit send verified configurations only
Authorized user	device configuring	permitted	authorized to edit not authorized to send

You can use the SCD software to register with these user groups. When the SCD software is started, you will automatically belong to the user group Machine operator. To be able to send configurations, log in with the device or the device system as Machine maintenance personnel or as Authorized user, using the appropriate password.

Note: The factory-set password (ABGM) has been entered for the user group Authorized user. If you wish to secure access to the configuration of the devices, you must change this password in each configured device.

Figure 2: Description of a dialog

These descriptions explain the functions and interrelations of the dialogs. Use the button **Detailed instructions** in the descriptions to go to “Step-by-step instructions” of the online help.

Detailed instructions

Figure 3: Button detailed instructions

As the SCD software is designed for the configuration and diagnosis of a variety of different safety devices supplied by Allen-Bradley Guardmaster, there are also different device-specific help subjects depending on the software modules installed. You reach these subjects via the reference item **Device-specific subjects** at the end of the dialog description.

Device-specific subjects

Figure 4: Reference device-specific subjects

The button **Content** in the dialog descriptions and in the step-by-step instructions will always take you back to the list of contents.

Once back in the list of contents and in the appropriate dialog descriptions, you can then open the operating instructions of the desired safety devices. To do so, you must have the Adobe Acrobat® Reader™ installed on your PC.

How to Use This Document

After you have carefully read the above sections, please note the following, regarding this document.

- If the software is not yet installed, please read the **Installation** section in this manual.
- If you are working with the software for the first time, please read the **Product Description** section.
- If you are familiar with the software and want to configure devices, please read the **Configuration** section.
- If you are familiar with the software and want to diagnose devices, please read the **Diagnosis** section.

Installation of the Software

Note The minimum system requirements for the operation of the Safety Configuration & Diagnostic software are:

- Standard Intel Pentium PC, 233 MHz, 64 MB RAM
- RS 232 serial interface
- Operating system MS Windows 95/98/NT 4.0/2000 XP
- A printer driver of your choice must be installed.

Before beginning the installation, close all other programs. An installation assistant will guide you through the installation of the software. During the installation, you will be able to make the following settings:

- The directory, in which the software will be installed (default: the program files folder in your system).

Installation Step-by-Step

Preparing for Installation

- Start your PC and place the installation CD in your CD-ROM drive.
The software assistant will start automatically. It allows you to open the documentation and to install the software.

If Windows does not start the software assistant automatically:

- Click **Run...** in the **Start** menu.
- Enter the following command line in the field **Open**:
d:\program\setup.exe
(If necessary, replace d with the drive designation of your CD-ROM drive).
- Click on **OK**.
- The dialogue **Safety Configuration & Diagnostic Software** appears.

Note If your operating system is set for another country than the available languages, the dialogue box "Select Language" appears before the dialogue Allen-Bradley Guardmaster Safety Configuration and Diagnostic Software. Select the desired program language here.

- Go to the dialogue **Allen-Bradley Guardmaster Safety Configuration & Diagnostic Software** and select **Install software, Allen-Bradley Guardmaster SCD** and click the button **OK** beside the selection.

Note If a version of the SCD software is already installed on your PC, a warning appears. Close the installation and uninstall the existing version of the SCD software (Start, Programs, Allen-Bradley Guardmaster Applications, Uninstall SCD).

Close Programs

The next dialog indicates that:

- All programs must be closed
 - The software is protected by copyright and international contracts
- If other programs are running on your PC, click the button **Cancel**.
 - Close all programs on your PC.
 - Restart the installation.

or:

- If no other programs are running on your PC, click the button **Continue >**.
This will take you to the next dialog box in the assistant.

Select the Target Directory

In the next dialog box, you select the target directory, i.e. the directory in which the program data are to be installed.

- If you accept the default directory, click the button **Continue >**.
This will take you to the next dialog of the Assistant.

or:

- If you wish to install the program in another directory, click the button **Search...**
This will open a dialog in which you can select another directory on your PC or where you can define a new directory.
- When you have returned to the installation assistant, click the button **Continue >**.
This will take you to the next dialog in the assistant.

Start of the Actual Installation Process

In the next dialog box, you are informed that all preparations are now concluded and that the actual installation can now be started.

- Click the button **Continue >**.
The program files will be installed on your PC and the required settings will be made in the system.
- If you wish to change any previous settings, click the button **< Back**.
This will take you back to the previous dialog of the assistant.

Installation of Acrobat® Reader™

You may possibly have to install the Acrobat® Reader™. This program allows you to read the user manual and the operating instructions without inserting the CD-ROM into the drive.

- Click on the button **Install Acrobat® Reader™**.
The installation program for the Acrobat® Reader™ now starts.

Finishing the Installation

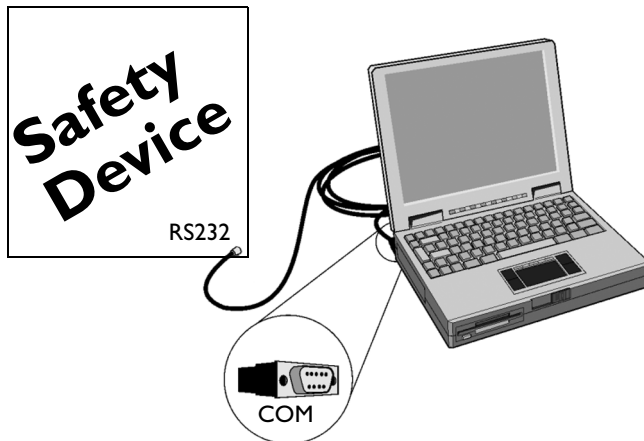
After installing the Acrobat® Reader™ the dialog box, **Installation completed** appears.

- Click on the button **Finish**.
The Software assistant is ended.

Product Description

Depending on purpose and operating mode, some devices supplied by Allen-Bradley Guardmaster Safety Systems may be configured differently. The parameters of such a configuration are saved in these devices.

The Safety Configuration & Diagnostic Software has a graphic user interface, which allows you to complete and modify the configuration of devices supplied by Allen-Bradley Guardmaster Safety Systems. The software is not suitable for the configuration of devices supplied by other manufacturers.



- The Safety Configuration & Diagnostic Software allows you to:
- Design a configuration and send it to connected devices.
 - Receive the existing configuration of a connected device, edit it, and send it to the device.
 - Save the configuration in files and to send it to devices of the same type (with the same type code) and with the same design use.

IMPORTANT Test the devices for operational readiness.
The software is unable to determine if a device is mounted operationally or not. Once you have successfully transferred the configuration drafts, check to see if the Allen-Bradley Guardmaster safety devices actually monitor your machine or system the way you intended.
All values have been computed by the PC on which the SCD software runs. Allen-Bradley Guardmaster is therefore unable to warrant that no computer-specific computing errors will occur.

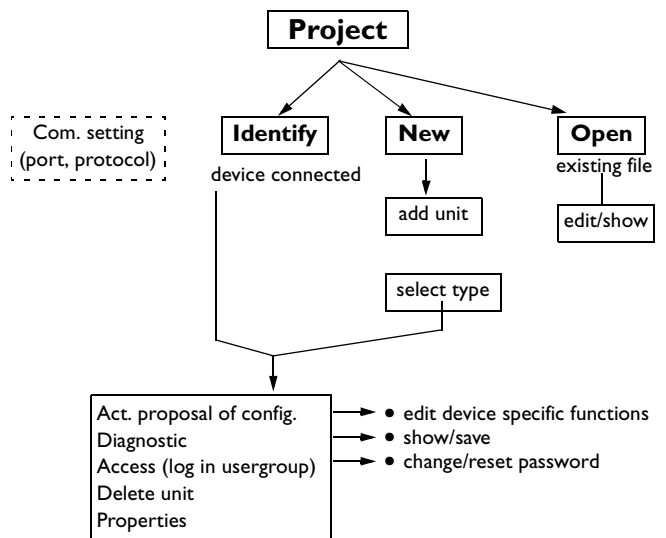
The configuration of the devices is password-protected, with the effect that only the members of the appropriate **user groups** will be able to transfer configurations to the devices.

You can also use the Safety Configuration & Diagnostic Software to diagnose connected devices. The diagnosis data will be displayed on the monitor.

Structure of the Program

In principle, the program provides different paths for start. Within each path, different options can be used, i.e. Identify, New or Open.

Project means the entire file where different products or scenarios are collected, i.e., Light Curtains with Host-Guest system, Laser Scanner, Busnodes.



Identify

For this function, a safety device should be already connected. The SCD software automatically recognizes the type of the device as well as its configuration.

New

If a new project should be defined. This may also be used. It is possible to create a new project offline without devices connected. It can be saved on the hard drive of the PC after configuration.

Open

For opening an already saved project, i.e. for further configuration.

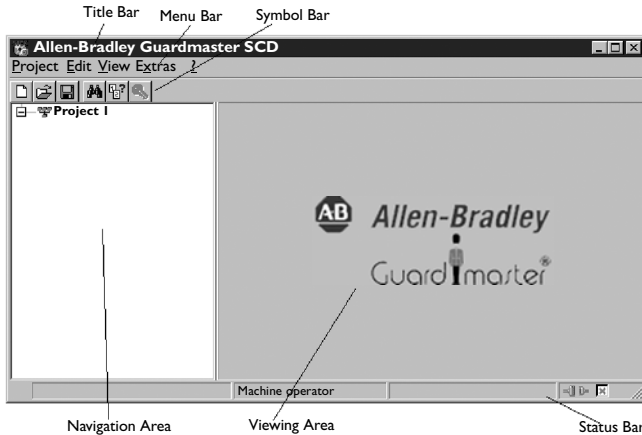
User Interface

How to Start the Software:

- Go to the Start menu and select the command **Programs, Allen-Bradley Guardmaster Applications, Allen-Bradley Guardmaster SCD software.**
The Safety Configuration & Diagnostic Software will now be started.

Note To start the SCD software directly from the Windows Explorer, double-click the file SCD_Run.exe in the directory C:\Programs\Allen-Bradley Guardmaster Applications\SCD.

Once the program has started, the screen is initially blank. Device combinations saved or identified will eventually be shown graphically in the user interface. These can then be used to configure or diagnose Allen-Bradley Guardmaster safety devices.



The user interface includes title bar, menu bar, symbol bar, the navigation area, the viewing area and the status bar.

How to close the software:

- Go to the menu **Project** and select the command **Quit**.
The program window will be closed. If, at this point, you have yet not saved the data of an open project, you will be prompted to do so.

Menu Bar, Tool Bar and Status Bar

The menu bar and the tool bar are found on the top of the software window. The menu bar includes the commands for the fundamental operation of the software, whereas the tool bar provides the most important commands in the shape of buttons. Moving over a button will open a brief information tag (tool tip) on the function of the button.



Figure 5: Menu bar with tool tip

The status bar is at the bottom of the software window. It shows:

- The status of the program execution and progress if the action is protracted
- The user group to which you belong at present
- The name of the project or device in the navigation area
- Whether the PC is connected to a device
- Whether the configuration has been verified



Figure 6: Status bar with symbols for “connected” and “configuration verified”



Figure 7: Status bar with symbols for “not connected” and “configuration not verified”

The tool bar and the status bar can be shown or hidden.

Navigation and Viewing Area

The navigation area shows the devices of a device system hierarchically in a project tree. This project tree consists of a project symbol and one or several device symbols.

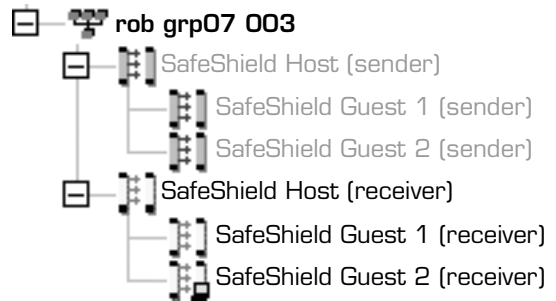


Figure 8: Example of a project tree

The viewing area is located to the right of the navigation area and is initially blank. It allows you to view the configuration draft (display of the configuration data of a device) or the configuration protocol (reviewing the configuration after transfer to the device).

You can change the size ratio of navigation area and viewing area.

Depending on whether a device is shown to be active or inactive, you can use its context menu to open certain commands.



Figure 9: Example of context menu

How to open a context menu:

- Click with the right mouse button on the project symbol or a device symbol.
A context menu with the available commands will open underneath the mouse pointer.

or:

- Highlight the project symbol or a device symbol and acknowledge with the F7 key.

Note Commands shown in grey are not available now, or your access authority is insufficient.

Printer Set-Up

You can print the diagnosis reports and the configuration protocols as hardcopies. To do so, a printer must be selected and set up for the SCD software.

Selecting the Language

The SCD software can be operated in a variety of different languages. Select the appropriate language in the menu under **View**.

Note The project tree and the context menu of the project tree will change their language only after a new project is generated or after a project has been identified or opened.

Keyboard Commands

The SCD software allows you to execute frequently used functions via function keys or with key shortcuts.

Key or Key Shortcut	Description
Ctrl + N	Create a new project
Ctrl + O	Open existing project
Ctrl + S	Save project
F1	Open the help file
F3	Identify connected project
Shift + F3	Select communication connection
F4	Compare connected project with open project
F7	Open the context menu
F8	Change user group
Alt + F4	End SCD program
Esc	Close dialog without saving-Abort

Directory Structure of the Program

To make it easier for you to navigate through created projects, device configurations, diagnosis reports, etc., the program creates a directory structure in the directory **Allen-Bradley Guardmaster** SCD software during installation.

This directory structure consists of subdirectories for the individual types of files which you are allowed to save in the SCD program:

- **Backup**
This directory holds the program files of an earlier version saved after an update. You must not save any other files in this directory!
- **Device-specific directories** (e.g. SafeShield)
This directory includes subdirectories which are suggested as the directory when saving device-specific files, e.g. diagnosis reports or configuration protocols.
- **Import-Export**
Suggested as default by the SCD software for exporting and/or importing configuration drafts.
- **Projects**
Suggested by the SCD software for saving project files.
- **System**
This directory holds the system-specific SCD files. You must not save any other files in this directory!

Working with Projects

The devices which you configure, maintain or diagnose with the SCD software are managed in projects and shown in a project tree.

You can use the SCD software to **create** a new project and its devices. When being created, the project is given a name that you can rename. Add devices in a project tree to a new project. But you can also **identify** previously wired devices and so create a project with all identified devices.

Note After devices have been identified you will be prompted to receive the configuration of the identified devices. This is important because the SCD will otherwise offer that configuration draft for editing which a device has when it is newly delivered, and not the one which may have already been sent to the device.

After identification, check to make sure that all devices in the project have been properly identified. Defective cable connections can at times result in device segments not being identified completely.

You can **save** the projects in files and later **open** them again.

Note Only one project at any one time can be opened in the SCD program. If a project is open while opening or creating a project, the project will be closed (you may be prompted to save first). Only one project at any one time can be opened in the SCD software.

If you open an existing project, then you should **compare** the displayed devices with the connected devices.

Note By comparing you will be able to verify that the connected devices and the devices shown in the project tree have matching type code. You will **not** verify that the configuration of the connected devices match the configuration draft saved in the SCD software.

You can also compare a project saved and/or opened in the SCD software with a saved **project file**.

When being created, the projects are given a **name** which you can **rename**. In addition, you can open a list showing the **attributes** of a project or of a single device.

Note **When devices consisting of senders and receivers are involved, first connect the receiver because it needs to be configured first.**

Note The commands necessary to carry out the above-described functions are found in the menu **Project**. Please refer to the online help for a device-specific description and detailed instructions.

The SCD software will create a blank project, establish connection with the connected devices, identify these, and show them as a project tree with device symbols.

During this time, the project status will be shown in the status bar.

If devices are involved which are used in pairs (e.g. the light curtain SafeShield), and if you have connected a sender, the SCD software will open an entry window for the type codes of the opposite devices. The dialog opens once for each device.

After the devices have been identified, you will be asked in a message dialog whether you wish to read the current device configuration into the SCD program.

The Project Tree

The project tree of the devices is shown in the navigation area.

The devices existing in the project tree can be displayed in the “active” or in the “passive” mode:

Symbol Meaning



Active devices are shown in color.

Active means that the device has a complementary unit to which a connection has been made via the interface and that the complementary unit has been identified by the SCD software.



Passive devices are shown in grey.

Passive means that there is at present no connection to this device, either because it is currently disconnected or because it could not be identified. This is important particularly in devices such as the safety light curtain that consists of sender and receiver. As the PC with the SCD software can be connected only to the sender or the receiver, the complementary unit is always shown in the passive mode.



You can identify the device to which the PC is connected by the device symbol showing a PC.



Unknown or unidentified devices are shown with a question mark.

The device status is symbolized by the color of the lettering:

Rotating
Laser Scanner

Configured devices are shown with blue lettering.

Standalone
(receiver)

Nonconfigured devices or devices in which a malfunction has occurred are shown with red lettering.

Standalone
(receiver)

Devices where the SCD software is unable to identify their status (not connected, not identified) are shown with grey lettering.

Change Project Name

You can change the name of a project. The name will be accepted as application name and saved in the devices.

Note The project name will only be accepted as an application name if the application name has not been read out from a device.

Compare with Project File

You can also compare a project saved and/or opened in the SCD software with a saved project file. A dialog box will show the saved project on the left and on the right a comparison protocol. In this dialog you can **open** the project file compared with the open project.

Add Devices

If you have created your own project in the SCD software program, you can also **add** one or several devices. The device selection assistant will assist you in this step. The class of devices you select there will depend on which device classes you have selected during installation. Added devices can be **deleted** again from the project.

Note The commands necessary to carry out the above-described functions are found in the context menu of the project. Please refer to the online help for detailed instructions.

Properties

To check the type codes and the serial numbers of the devices, you can display the **attributes** of a project and/or the attributes of a single device. The list shows all type codes and the serial numbers of the devices.

Communication

The software communicates with the devices via a cable link. To make sure that the data communication between your PC and the connected devices functions properly, you must select a communication protocol.

In addition, you must determine one Comm port of your PC as the connection for the devices.

Also, from the connections available on your PC, select the one where the devices are connected.

Note The connection you select must not be used by any other peripheral (e.g. a mouse). If you do, the system will not function properly.

Configuration

Use the SCD software to configure the Allen-Bradley Guardmaster safety devices.



ATTENTION: Plan your configuration carefully!

The configuration of Allen-Bradley Guardmaster safety devices must be carried out with ultimate accuracy and must match the status and the condition of the machine or system to be monitored.

Incorrect configurations may result in injury or death.

Always begin by creating a new configuration draft in the SCD software or by **editing** a configuration draft received from the devices. Generate the configuration draft either with the help of the **configuration** assistant or in a **configuration dialog box** with file cards.

Alternatively, you can also open a configuration draft from an existing and saved project.

For the actual configuration of the devices supplied by Allen-Bradley Guardmaster Safety Systems, transfer the configuration draft to the connected devices.

Note You can transfer the configuration draft to the devices or the device system only if your PC is connected to the devices and if you are registered as user in the appropriate user group of the devices.

Note In a cascaded system, the commands for receiving, editing and sending the configuration draft are only available in the context menu of the host.

After sending the configuration draft, a **configuration protocol** will be displayed which you must first acknowledge before the configuration is enabled in the devices.

Note As soon as a configuration draft has been sent and acknowledged by an authorized user, it is deemed to be **verified**. You can see this by a small tick or check in the status bar.



Figure 10: Status bar with tick/check for "configuration verified"

The project with the verified configuration draft can then be saved and later be opened and sent also to other devices by the machine maintenance personnel.

The configuration draft of a single device can also be **exported** and **imported** to other devices with the same type code. This allows you to send a verified configuration to devices used in identical applications.

Note The commands necessary to carry out the above-described functions are found in the menu **View** and in the context menus of the device symbols. Please refer to the online help for a device-specific description and detailed instructions.

File Cards or Assistant


Note The use of file cards is dependent upon the type of device being configured (light curtains, laser scanner, BusNode, etc.).

You can create the configuration draft either with the help of the **configuration assistant** or with the **file cards**. The configuration assistant will guide you step-by-step through the configuration, from the first to the last setting. The file cards allow you specifically change one or several configuration parameters.

Note The commands necessary to carry out the above-described functions are found in the menu **View**, dialog window.

A cascaded system (light curtains) is configured with a configuration assistant or with a dialog with file cards. Several runs through the setting dialog boxes will be completed, respectively the file cards will be repeatedly offered.

Note You can tell from the register bar of the cards in the file card for which device the data apply.

Example: 

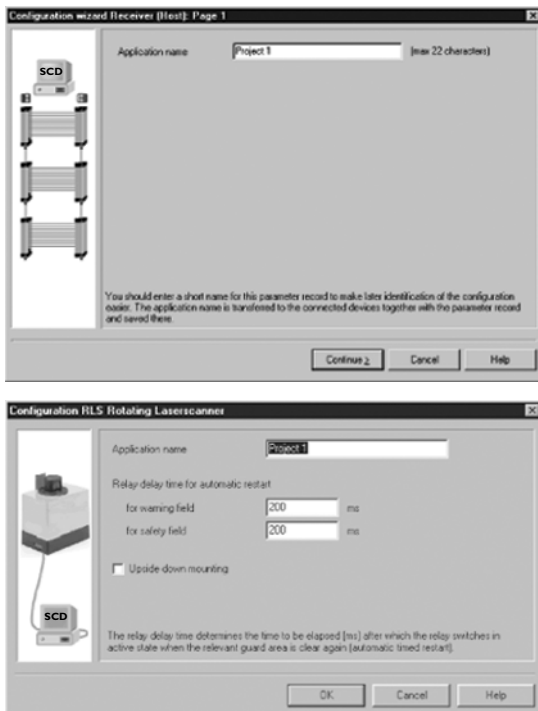


Figure 11: Dialog box for the configuration assistant

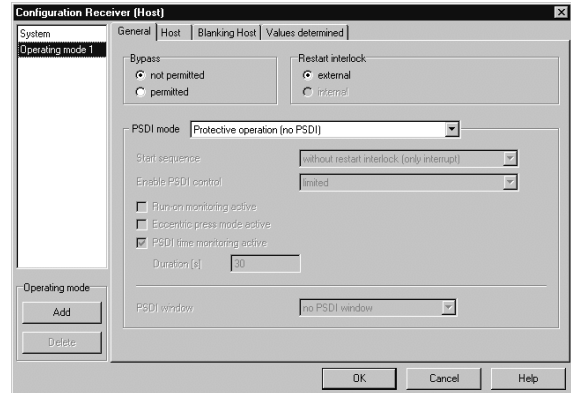


Figure 12: Configuration with file cards

Configuration Protocol

Going to the viewing area of the SCD software, you can **display** the configuration draft of the whole project or of the single devices. These are the data which are currently saved in the SCD software. These may differ from the data saved in the devices.

The commands necessary to carry out the above-described functions are found in the menu “Project” and in the content menus of the devices.

After the configuration data has been transferred to one or several devices, the configuration protocol will be shown automatically. The actual data are read out from the device and displayed.

If the data read does not match the data in the configuration draft, it will be shown in black. If the data read out differs from that in the configuration draft, it will be shown in red. The configuration protocol cannot be approved.

You can insert an annotation in the protocol, save the protocol or print the protocol.

IMPORTANT Carefully check the configuration protocol. Carefully check that the configuration data displayed coincide with those you wish to enter. Make sure there are no typing or transmission errors which might falsify the desired result. Once you have successfully transferred the configuration, specialist personnel must check to see if the Allen-Bradley Guardmaster safety device actually monitors your machine or system the way you intended. Only after completing this step, go to real-time operation.

Note The new configuration will be activated on the device after acknowledgement. If you **abort** the configuration instead of acknowledging it, the device or the device system will receive an invalid configuration.

Note As soon as the configuration protocol is displayed, the standard menus of the software will disappear. Only the menu **Project** with the appropriate buttons will then be available. The navigation area of the SCD software can no longer be operated.

User Groups

Three user groups have been defined in the devices supplied by Allen-Bradley Guardmaster Safety Systems. These user groups have different authorizations for transferring configurations to the devices.

User Group	Function	Diagnostic	Configuration
Machine operator	Check devices	Permitted	Authorized to edit not authorized to send
Machine maintenance personnel	Change devices	Permitted	Authorized to edit authorized to send verified configurations only
Authorized user	Device configuring	Permitted	Authorized to edit authorized to send

You can use the SCD software to register with these user groups. When the SCD software is started, you will automatically belong to the user group machine operator. To be able to send configurations, log in with the device or the device system as machine maintenance personnel or as authorized user, using the appropriate password.

Note The factory-set password Allen-Bradley Guardmaster ABGM has been entered for the user group authorized client. If you wish to secure access to the configuration of the devices, you must change this password in each configured device.

to make sure that nobody can send configurations to the devices!

Diagnosis Data

The SCD software allows you to diagnose the connected devices. To do so, load the diagnosis data to the viewing area of the monitor.

Note As soon as the diagnostic data is displayed, the standard menus of the software will disappear. Only the menu **Project** and the appropriate buttons will then be available. The navigation area of the SCD software can no longer be operated.

You can **print** and **save** the diagnosis data. You can also insert an **annotation** via an additional dialog. This annotation will also be printed and saved.

Note The commands necessary to carry out the above-described functions are found in the context menu of the devices under **Diagnostics**. Please refer to the online help for a specific description and detailed instructions.

Annotations

You can add annotations (comments) to the reports displayed in the viewing area of the SCD software. These annotations are also printed with the appropriate report and saved.

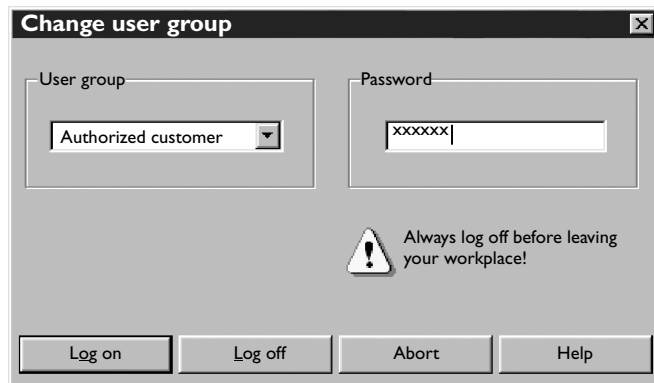


Figure 13: Dialog for changing the user group

Note If a device system has been assembled using devices which have already been configured, the individual devices may have different passwords. In this case you will be asked for your password separately for each device.

Once you have entered the correct passwords for all devices, the password for the first device will be assigned to all devices.

Note If you leave the PC connected to devices without personal attendance or supervision, you must log off in the user group machine maintenance personnel or authorized user



Allen-Bradley

Guardmaster[®]

Please contact us for Technical Assistance:

In the U.S.: 1-800-666-0001

Outside U.S.: 001-978-441-9500

On line: <http://www.ab.com/safety>

www.rockwellautomation.com

www.ab.com/safety

Corporate Headquarters

Rockwell Automation, 777 East Wisconsin Avenue, Suite 1400, Milwaukee, WI, 53202-5302 USA, Tel: (1) 414.212.5200, Fax: (1) 414.212.5201

Headquarters for Allen-Bradley Products, Rockwell Software Products and Global Manufacturing Solutions

Americas: Rockwell Automation, 1201 South Second Street, Milwaukee, WI 53204-2496 USA, Tel: (1) 414.382.2000, Fax: (1) 414.382.4444

Europe/Middle East/Africa: Rockwell Automation SA/NV, Vorstlaan/Boulevard du Souverain 36, 1170 Brussels, Belgium, Tel: (32) 2 663 0600, Fax: (32) 2 663 0640

Asia Pacific: Rockwell Automation, 27/F Citicorp Centre, 18 Whitfield Road, Causeway Bay, Hong Kong, Tel: (852) 2887 4788, Fax: (852) 2508 1846

Headquarters for Dodge and Reliance Electric Products

Americas: Rockwell Automation, 6040 Ponders Court, Greenville, SC 29615-4617 USA, Tel: (1) 864.297.4800, Fax: (1) 864.281.2433

Europe/Middle East/Africa: Rockwell Automation, Brühlstraße 22, D-74834 Elztal-Dallau, Germany, Tel: (49) 6261 9410, Fax: (49) 6261 17741

Asia Pacific: Rockwell Automation, 55 Newton Road, #11-01/02 Revenue House, Singapore 307987, Tel: (65) 6356-9077, Fax: (65) 6356-9011